



Molly Cantor, Shelburne Falls



Kristen Kieffer



Kaleidoscope Pottery



Tom White, Northfield



Francine T. Ozereko, Pelham



Donna McGee, Hadley



Lucy Fagella, Greenfield



Stephen Earp, Shelburne Falls



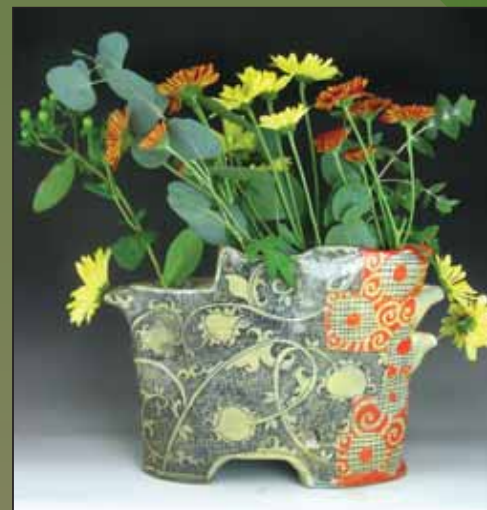
Sam Taylor



Hayne Bayless



Daniel Bellow



Adero Willard



Mary Barringer, Shelburne Falls



James Guggina, Florence



Mara Superior



Tiffany Hilton, Florence



Todd Wahlstrom

9th annual ASPARAGUS VALLEY

2013

Pottery Trail

april 27 & 28

10 am - 5 pm

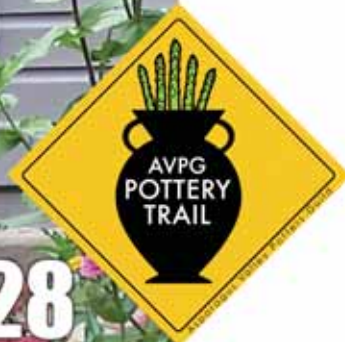
A sale and tour of 9 clay studios in western Massachusetts

www.apotterytrail.com

ASPARAGUS VALLEY POTTERY TRAIL

Francine T. Ozereko
5 Amherst Road
Pelham, MA 01002
www.apotterytrail.com

PRSRST STD
U.S. POSTAGE
PAID
PERMIT 183
GREENFIELD MA



april 27 & 28
10 am - 5 pm

Enjoy the hospitality of our local sponsors while you're on the Trail

AMHERST

Chez Albert
178 North Pleasant, Amherst, MA
413-253-3811
www.chezalbert.net

Pasta E Basta
26 Main Street, Amherst, MA
413-256-3550
www.pastaebastaofamherst.com

The Henion Bakery
174 North Pleasant, Amherst, MA
413-253-4909
www.henionbakery.com

The Pub Restaurant
Excellent hamburgers, salads, fish and chips, full meals.
15 East Pleasant, Amherst, MA
413-549-1200
www.amherstpub.com

GREENFIELD

Green Fields Market / Franklin Community Co-op
Sandwiches, soups, salad bar, hot entrees, and bakery. Local specialties, great snacks!
144 Main Street, Greenfield, MA
www.franklincommunity.coop

Hope & Olive
Lunch, brunch, dinner, beer, wine, cocktails!
40 Hope Street, Greenfield, MA
413-774-3150 www.hopeandolive.com

Magpie Woodfired Pizzeria
Entrees, salads, pastas, beer, wine, and cocktails. Outdoor patio.
21 Bank Row, Greenfield, MA
413-475-3570 www.magpiepizza.com

NORTHFIELD

The House on the Hill
A Unique Bed and Breakfast Experience!
330 Leyden Road, Greenfield, MA
413-774-2070 www.thehouseonthehillbnb.com

The People's Pint Brewery & Restaurant
Open Daily at 11:00 am
24 Federal Street, Greenfield, MA
413-773-0333 www.thepeoplespint.com

SHELBURNE FALLS

Centennial House B&B
94 Main Street, Northfield, MA
877-977-5950 www.thecentennialhouse.com

Mim's Market
60 Main Street, Northfield, MA
413-498-9900

Rooster's Bistro
Breakfast, lunch and dinner.
74 Main Street, Northfield, MA
413-498-0006

SHELBURNE FALLS

Kenburn Orchards Bed & Breakfast
Yankee Magazine's Editors Choice 2006, 2008
1394 Mohawk Trail, Shelburne, MA
413-625-6116 Fax: 413-625-6443
toll-free reservations: 1-877-KENBURN
info@kenburnorchards.com
www.kenburnorchards.com

McCusker's Market / Franklin Community Co-op
Entrees, salads, soups, coffee, tea and hot cider. Baked goods, great cheeses and organic produce.
3 State Street, Shelburne Falls, MA
www.franklincommunity.coop

SHELBURNE FALLS

Mo's Fudge Factor
Pure decadence.
9 State Street, Shelburne Falls, MA
413-625-6645
www.mosfudgefactor.com

The Bakers Oven Bistro
A farm to table restaurant serving lunch and dinner.
24 Bridge Street, Shelburne Falls, MA
(413) 489-3110
www.thebakersovenshelburne.com

West End Pub
Yes, a real pub in Shelburne Falls!
16 State Street, Shelburne Falls, MA
413-625-6216
www.yelp.com/biz/west-end-pub-shelburne-falls

SHEFFIELD



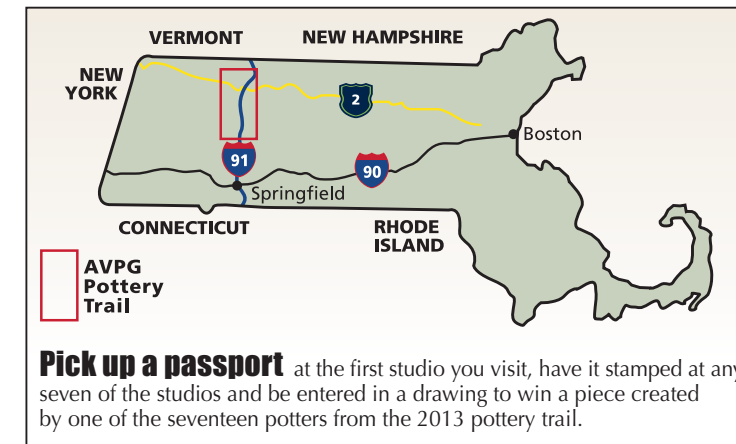
The finest moist clay and complete ceramic supplies.
995 North Main Street, US Route 7
Sheffield, MA 01257
Toll-Free: 888-774-2529 x20
www.sheffield-pottery.com



www.apotterytrail.com



- TW Tom White Pottery**
205 Winchester Road, Northfield, MA 01360 413.498.2175
www.tomwhitepottery.com
Guest Potter: **Hayne Bayless** www.sidewaysstudio.com
Guest Potter: **Sam Taylor** www.dogbarpottery.com
From Interstate 91: Take Exit 28A on to Rt. 10 North. Cross the CT River. Turn left at intersection with Rt. 63. From the east take Rt. 2 to 63 and take 63 north to Northfield. Take 10/63 North through the Center of Northfield. Continue on Rt. 10 after 63 turns left. At top of hill, turn right onto Pierson Rd. to end. At T-intersection and stop sign, the studio is directly in front of you! From Amherst, follow Rt. 63 North to Northfield and follow directions above.
- LP Lucia Pottery, Lucy Fagella**
86 Leyden Road, Greenfield, MA 01301 413.522.8370
www.luciapottery.com
From I-91, Exit 26 to Greenfield center. Go to town, make a left on Conway St. Take Conway St. for 2 miles, (name changes to Leyden Rd.). We are #86 Leyden Rd. second (left) driveway after Murphy Park.
- SE Stephen Earp Redware**
15 Masonic Ave., Shelburne Falls, MA 01370 413.625.0015
www.stephenearp.com
From North and South: I-91 to Exit 26. Take Rt. 2 West/Mohawk Trail, 8.5 miles. Turn left onto 2A/Shelburne Falls at the Sweetheart Restaurant. Take first left onto Bridge St. Once on Bridge St, take first left onto Masonic Ave. Stephen Earp Redware is at the end, behind the big red house. Park on the street.



- MB Mary Barringer**
5 Cross Street, Shelburne Falls, MA 01370 413.625.9200
Guest Potter: **Todd Wahlstrom** www.toddwahlstrom.com
From North and South: I-91 to Exit 26. Take Rt. 2 West/Mohawk Trail, 8.5 miles. Turn left onto 2A/Shelburne Falls at the Sweetheart Restaurant. Take first left onto Bridge St. Go right on Main St./Rt 112 North, then left on Cross St. Parking available in town lot just before the intersection.
- MC Molly Cantor Pottery**
20 Bridge Street, Shelburne Falls, MA 01370 413.625.2870
www.mollycantor.com
Guest Potter: **Daniel Bellow** www.danielbellow.com
From North and South: I-91 to Exit 26. Take Rt. 2 West/Mohawk Trail, 8.5 miles. Turn left onto 2A/Shelburne Falls at the Sweetheart Restaurant. Take first left onto Bridge St. Studio is five blocks up on the right.
- FO Francine T. Ozereko**
5 Amherst Road, Pelham, MA 01002 413.253.2664
www.ftostudio.com
Guest Potter: **Kristen Kieffer** www.kiefferceramics.com
From Amherst Ctr, take Main St. 2 miles East to Pelham. My house/studio is the 3rd on right after the "Town Line" sign. Driveway is beyond house at end of row of trees. From Rt. 202, take a right at blinking light on to Amherst Rd. Studio is 4 miles down hill on left.
- DM Donna McGee**
47 East Street, Hadley, MA 01035 413.584.0508
www.donnamcgee.com
Guest Potter: **Mara Superior** www.marasuperior.com
From I-91, take Rt. 9 east in Hadley. Go over river and drive 2 miles on Rt. 9 to traffic light at East St. Turn left onto East St. (from Amherst, turn right) and drive 1/4 mile to large red building with water tower. On the bike path!
- JG James Guggina Ceramics**
908 Ryan Road, Florence, MA 01062 413.587.9410
www.coolpots.com
Guest Potter: **Kaleidoscope Pottery** www.kscopepottery.com
From Rt. 9 west in Downtown Northampton, go west (left) on Rt. 66 for 4.7 miles. Turn right on West Farms Rd. and go .7 miles. Turn right on Ryan Rd. 908 Ryan Road is .4 miles on the right.
- TH Tiffany Hilton Pottery**
221 Pine Street, studio #352, Florence, MA 01062 413.824.6506
www.tiffanyhilton.com
Guest Potter: **Adero Willard** www.aderowillard.com
From the North take I-91 to Exit 20. Turn right at light on Bridge Rd. At second light turn left on N. Maple St., go 1 mile to end and turn right on Nonotuck St. Road will end facing large white "Arts & Industry" building. Follow signs to the 3rd floor, studio #352. From the South take I-91 to Exit 19. Straight across on Damon Rd., which becomes Bridge Rd. after 1 mile. Follow instructions above.

ASPARAGUS VALLEY POTTERY TRAIL 2013